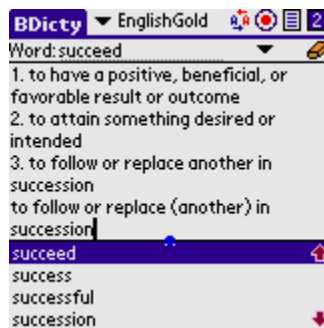


# **BEIKS DICTIONARY (BDicty)**

<http://www.beiks.com/palmzonebg/bdicty.htm>

## USER GUIDE

VERSION 5



© 1998-2002 Beiks, LLC

[HTTP://WWW.BEIKS.COM](http://www.beiks.com)

License agreement .....	4
End user license agreement.....	4
Acceptance of License Terms.....	4
License .....	4
Termination of License.....	5
Warranty of Title .....	5
Limited Product Warranty .....	6
Waiver of Implied Warranties.....	6
Warranty Disclaimer.....	6
Warranty Remedies .....	7
Limitation of Remedies .....	7
Governing Law.....	7
Information.....	7
Licensee's Acknowledgment.....	8
Site license agreement.....	8
Getting started .....	9
Welcome! .....	9
System Requirements .....	9
Quick Installation Guide .....	10
Installation for MS Windows (EXE files) .....	10
Installation for MS Windows (ZIP files).....	10
Installation for MS Windows (PDB/PRC files) .....	11
Installation for Mac OS (ZIP/SIT files) .....	12
Installation for Mac OS (PDB/PRC files) .....	12
Installing directly on media cards (MMC, SD, MS) .....	15
Installing files on media cards for MS Windows users .....	15
Installing files on media cards for Mac OS users .....	15
Uninstalling the program .....	16
Purchase and Registration.....	17
Which is which .....	17
Do you have to purchase/register .....	17
Why register/purchase the dictionary program.....	18
Why register/purchase a lexicon .....	18
How to purchase / register .....	19
Using The Program.....	20
Basic introduction .....	20
Major application screens.....	21

Standard dictionary browse / lookup screen .....	22
Resident dictionary lookup screen .....	24
Phrasebook screen .....	26
Program settings screen: General settings .....	27
Program settings screen: Media settings .....	28
Program settings screen: Startup settings .....	30
Program settings screen: Resident lookup settings .....	31
Add / Edit Screen .....	33
Common commands and operations.....	34
Change currently active lexicon .....	34
Delete the currently active lexicon .....	34
Switch horizontal/vertical mode .....	34
Lookup a word from within other program.....	34
Enter new words .....	34
Display random word (word of the day) .....	34

# **LICENSE AGREEMENT**

## **END USER LICENSE AGREEMENT**

AS THE PERSON WHO HAS PURCHASED THE RIGHT TO USE OR INTENDS TO EVALUATE THIS MATERIAL, YOU ARE THE LICENSEE IN THIS AGREEMENT. YOU MUST CAREFULLY READ ALL OF THE TERMS OF THIS AGREEMENT BEFORE OPENING/INSTALLING THIS PACKAGE.

WHEN YOU OPEN THIS PACKAGE OR INSTALL THE APPLICATION (IN CASE OF ELECTRONIC DISTRIBUTION) IT MEANS THAT YOU ACCEPT ALL OF THE TERMS AND CONDITIONS OF THIS AGREEMENT. IF YOU DO NOT AGREE WITH ALL OF THE TERMS AND CONDITION RETURN THE UNOPENED PACKAGE FOR REFUND.

## **ACCEPTANCE OF LICENSE TERMS**

1. As the licensee, you agree that when you open the package or install the application that accompanies this agreement and that contains one copy of the software program and related data files, referred to as the "Program," you indicate your acceptance of the following terms and conditions. You acknowledge that if you do not agree with any of the following terms and conditions, you shall promptly return the unopened package and its contents to Beiks, LLC for refund of the purchase price.

No refund will be given if the sealed package containing the Program diskette has been opened or if any of the components of the product are missing.

## **LICENSE**

2. (a) You agree that Beiks, LLC is the sole owner of the Program, and as the licensee, you will not acquire title to the Program. Pursuant to this Agreement, you are licensed to:

(i) Use the Program on a single computer during the term of this Agreement.

(ii) Make one copy of the program for your backup purposes, provided that the copy contains all of the restrictive and proprietary notices that appear on the Software, including the copyright notice.

(iii) Transfer the Program and this license to one other party provided that the other party agrees to accept the terms and conditions of this Agreement, and that at the time of the transfer you either deliver all copies, whether in printed or machine readable form, to the transferee or destroy any copies not delivered. If you transfer this license your right to use the Program terminates and the license may not be transferred back to you.

(b) You agree not to use, copy, or modify the Program or any copy, modification, or merged portion, in whole or in part, except as expressly provided for in this Agreement.

(c) You agree not to sublicense, assign, or transfer the license or the Program, except as expressly provided in this Agreement, and that any attempt to do so shall be invalid and automatically terminate your license.

(d) You may not rent or lease the Program.

### TERMINATION OF LICENSE

3. The license granted by this Agreement shall commence when the seal on the package is opened and shall be effective for 5 years, unless otherwise terminated pursuant to the terms of this Agreement. You may terminate this license at any time by destroying or returning to Beiks, LLC, the Program and all its copies, modifications, and merged portions in any form. This license shall also be terminated automatically if you fail to comply with any term or condition of this Agreement or transfer possession of any copy, modification, or merged portion of the Program to more than one party. You also agree that on termination of this Agreement, you shall immediately destroy or return to Beiks, LLC, the Program and all its copies, modifications, and merged portions in any form.

### WARRANTY OF TITLE

4. Beiks, LLC, warrants that it has good title to the Program and the right to license its use to you free of any proprietary rights of any other party. Beiks, LLC shall defend you against any claims that use of the Program violates the proprietary rights of any other party.

### LIMITED PRODUCT WARRANTY

5. (a) Beiks, LLC, warrants the media that contains the Program to be free from defects in materials and workmanship under normal conditions of use for a period of 90 days from the date of delivery of the Program to you as set forth on your receipt for the purchase of the Program. This warranty is limited to you, the original Licensee, and is not transferable.

(b) The warranty contained in subparagraph 5(a) does not extend to any hard media (diskette, CD-ROM, DVD) that has been damaged as a result of your accident, misuse, abuse, or as a result of service or modification by anyone other than Beiks, LLC or an authorized Beiks, LLC dealer.

### WAIVER OF IMPLIED WARRANTIES

6. YOU ACKNOWLEDGE THAT THE PROGRAM IS LICENSED ON AN "AS IS" BASIS, AND THAT SHOULD THE PROGRAM PROVE DEFECTIVE, EXCEPT TO THE EXTENT SPECIFIED IN PARAGRAPH 5, YOU AND NOT BEIKS, LLC, ITS DISTRIBUTORS, OR ITS AUTHORIZED DEALERS ASSUMES THE ENTIRE COST OF ALL NECESSARY SERVICING, REPAIR, OR CORRECTION. THIS PARAGRAPH EXPRESSLY WAIVES THE IMPLIED WARRANTY OF MERCHANTABILITY AND FITNESS FOR A PARTICULAR PURPOSE.

### WARRANTY DISCLAIMER

7. (a) EXCEPT AS EXPRESSLY SET FORTH IN PARAGRAPH 5, NO OTHER WARRANTIES ARE MADE WITH RESPECT TO THE PROGRAM. BEIKS, LLC

EXPRESSLY DISCLAIMS ALL WARRANTIES NOT STATED IN THIS AGREEMENT.

(b) BEIKS, LLC, DOES NOT WARRANT THAT THE FUNCTIONS CONTAINED IN THE PROGRAM WILL MEET YOUR REQUIREMENTS OR THAT THE OPERATION OF THE PROGRAM SHALL BE UNINTERRUPTED OR ERROR-FREE.

(c) YOU ASSUME RESPONSIBILITY FOR THE SELECTION OF THE PROGRAM TO ACHIEVE THE RESULTS INTENDED BY YOU AND FOR THE

INSTALLATION, USE, AND RESULTS OBTAINED FROM THE OPERATION OF THE PROGRAM.

### WARRANTY REMEDIES

8. (a) During the warranty period Beiks, LLC or their authorized distributors shall replace the media that fails to meet the express warranty contained in Paragraph 5 provided it is returned to Beiks, LLC, or an authorized Beiks, LLC dealer with a copy of the receipt for the purchase of the Program. If Beiks or the authorized dealer is unable to deliver a replacement that is free of defects in materials or workmanship, you may terminate this Agreement and receive a refund of the purchase price by returning the Program to the authorized dealer you have purchased it from (including Beiks, LLC) with a copy of the receipt for the purchase of the Program.

(b) You agree that your sole remedies and Beiks, LLC's entire liabilities are as set forth in subparagraph 8(a).

### LIMITATION OF REMEDIES

9. IN NO EVENT SHALL BEIKS, LLC BE LIABLE TO YOU OR ANY OTHER PERSON FOR ANY DAMAGES, INCLUDING ANY INCIDENTAL OR CONSEQUENTIAL DAMAGES, EXPENSES, LOST PROFITS, LOST SAVINGS, OR OTHER DAMAGES ARISING OUT OF THE USE OF OR INABILITY TO USE THE PROGRAM.

### GOVERNING LAW

10. This Agreement shall be construed according to, and the rights of the parties shall be governed by, the law of the State of Texas.

### INFORMATION

11. If you have any questions or comments concerning the Program or this Agreement, please contact Beiks, LLC, at <http://www.beiks.com> and [support@beiks.com](mailto:support@beiks.com).

### **LICENSEE'S ACKNOWLEDGMENT**

12. BY BREAKING THE SEAL ON THIS PACKAGE OR INSTALLING THE PROGRAM (FOR ESD DISTRIBUTION), YOU ACKNOWLEDGE THAT YOU HAVE READ THIS AGREEMENT, UNDERSTAND IT, AND AGREE TO BE BOUND BY ITS TERMS AND CONDITIONS. YOU FURTHER AGREE THAT THIS AGREEMENT IS THE COMPLETE AND EXCLUSIVE STATEMENT OF THE AGREEMENT BETWEEN YOU AND BEIKS, LLC AND THAT IT SUPERSEDES ANY PRIOR AGREEMENT, ORAL OR WRITTEN, AND ANY OTHER COMMUNICATIONS BETWEEN YOU AND BEIKS, LLC, RELATING TO THE PROGRAM DESCRIBED IN THIS AGREEMENT.

### **SITE LICENSE AGREEMENT**

End users of site licensees must comply with the End User License Agreement above, unless otherwise permitted by their Site License Agreement.

Site license agreements are enclosed with site license orders. If you are end-consumer in a site license agreement, please contact your IT manager to obtain and read the Site License Agreement before using the product.



# **GETTING STARTED**

## **WELCOME!**

Welcome to BDicty, the second Palm OS® dictionary application ever and possibly the most popular one!

BDicty (pronounced “bee-dikti”) is a specialized dictionary reader program, optimized for reference content. For dictionaries, it aims to be what Adobe® Acrobat® is for general-purpose e-documents.

Focusing on reference content only allows the program to be lighter, faster, cheaper and – most importantly – best suited for its particular purpose.

BDicty works with reference databases called **lexicons** and sometimes **dictionaries**. The term **dictionary**, however, may lead to confusion: does it mean a paperback dictionary, a dictionary program or dictionary content? To avoid these we would prefer to call the BDicty data files **lexicons** or **dictionary lexicons**.

## **SYSTEM REQUIREMENTS**

BDicty 5 requires PalmOS version 3.5 or higher, including Palm OS 5.x, in order to operate properly.

The required available memory depends on the installed lexicons with an absolute minimum of around and above 100 kB.

As of the date of its official release, it had been tested and found to operate properly on the following PalmOS devices:

Handspring Visor, Visor Deluxe, Visor Edge, Visor Prism, Handspring Treo, TRG, TRG Pro, Handera 330, Palm III, Palm IIIx, Palm V, Palm Vx, Palm VII, Palm VIIx, Palm mXXX, Sony Clie NR xxx, Sony Clie T xxx, Sony Clie S xxx, Samsung smart phones, Kyocera smart phones.

# QUICK INSTALLATION GUIDE

## INSTALLATION FOR MS WINDOWS (EXE FILES)

The self-installing executable files can be recognized by the “.exe” suffix in their name, although Windows can sometime hide that extension from you. Anyway, the EXE files are usually the easiest to deal with since you will only have to run them once and they’ll guide you through the rest of the installation process.

To start that, all you have to do is double-click on the file icon as displayed in your Explorer or on the Desktop. Then just follow the instructions.

When it is done, you will usually need to perform a Hotsync in order to transfer the files to your PDA.

*Note: When installing EXE files on devices that have external media cards, you may want to place the large lexicon files directly on the external memory card. To do this, you should open the Palm Install Tool **after** the successful completion of the installation program, but **before** you perform Hotsync. For details, refer to the paragraph [“Installing directly on media cards”](#) below.*

## INSTALLATION FOR MS WINDOWS (ZIP FILES)

ZIP files are compressed files, which often contain one or more files inside. ZIP is very popular on Internet where it is important to transfer as little as possible (so that it gets transferred as fast as possible), but it can also be found on any other kind of media.

The ZIP files can be recognized by their file extension (“.zip”) and often by the graphical icon of a cabinet being compressed.

1. If downloading from Internet, download the ZIP file and store it somewhere in your computer. You can, for example, create a folder “Palm Downloads” in “My Documents” and store it there. To download the file, sometimes you need to **right-click** on the download link and choose “Save As...” or similar command.

2. Extract the ZIP file by using [WinZip](#) or other decompression utility of your choice. Extract the files in a folder with appropriate name, for example “My Documents\Palm Downloads\BDicty English Dictionary”.
3. Launch the Palm Install Tool program through Palm Desktop or from the Palm Desktop’s group in the Startup menu:
4. If there is another client using the same desktop, make sure **your** Palm User Name is selected in the “**User:**” pop-up list at the top of the Install Tool screen.
5. Click the “Add...” button. A **file selection** screen usually titled “Open” will appear.
6. Locate the folder where you have extracted the files from the downloaded archive. When you locate it correctly, one or more files with “.PDB” or “.PRC” extensions will appear in the dialog.
7. Usually you want to select **all** prc files that appear in the *Open* dialog. After selecting them, click “Open”. You will return back to the “Palm Install Tool” screen.

*Note: When installing a dictionary for first time, at least **two** files need to be present and installed: one will be the dictionary program, and the other one will be some dictionary lexicon.*

*Note: At this point, it is possible to instruct Palm Install Tool to install the large lexicon file on external media card, if your device is equipped with such. For more details, refer to [“Installing directly on Media Cards”](#) section below.*

8. Click “Done” to close the Palm Install Tool.
9. Put your device in its cradle and perform Hotsync to install the files.

## INSTALLATION FOR MS WINDOWS (PDB/PRC FILES)

Sometimes downloads may be directly in form of installable Palm OS files, for example “EnglishGold.PDB” or “BDicty.prc”. The procedure for installing such files is described in section [“Installation for MS Windows \(ZIP files\)”](#), except that the first few steps can be skipped since there is no ZIP file that needs to be decompressed.

PDB/PRC files are sometimes available for certain programs/lexicons at <http://www.beiks.com/mystuff>; they are also often included on CDs in addition to self-installations of the products, so that customers may as well perform custom installations.

When downloading from Internet, keep in mind that some browsers or download agents may have troubles identifying the file type and storing it. We recommend that you use right-click (or control-click on Mac) on the download link and select "Save As.." or other similar command to download the file (it is different for different browsers). You may also want to turn off your downloading agent, if you use one.

## INSTALLATION FOR MAC OS (ZIP/SIT FILES)

1. Download the ZIP or SIT file and place it in appropriate folder. We recommend storing the files in the Palm/Add-on folder on your Macintosh HD. Unless you have a specialized download agent configured otherwise, the downloaded file will end up at your Mac Desktop; we recommend moving it from there to the Palm/Add-on folder.
2. Using your favorite decompression tool, usually [Stuffit Expander](#), extract the contents of the file by double-clicking on it.

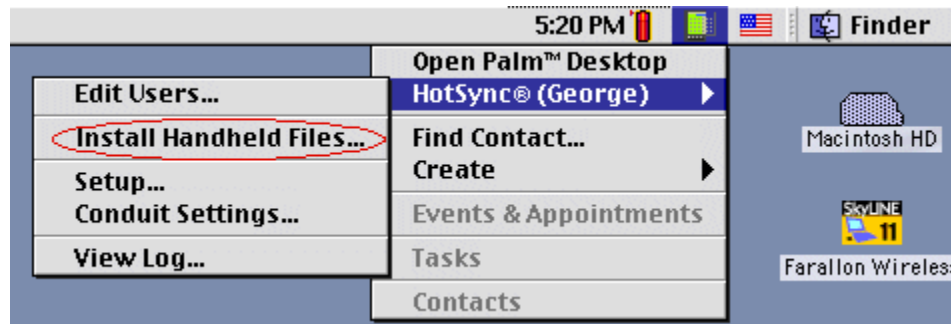
*If the file is a ZIP file and double-clicking on it does not seem to bring the desired effect, you may try renaming it to have ".sit" extension. If this does not help either, then you will need to download and install a decompression program like [Stuffit Expander](#).*

After the file(s) get extracted, they are usually placed in a new folder with the same name as the original file. In our example that would be "Macintosh HD/Palm/Add-on/BDicty.sit Folder".

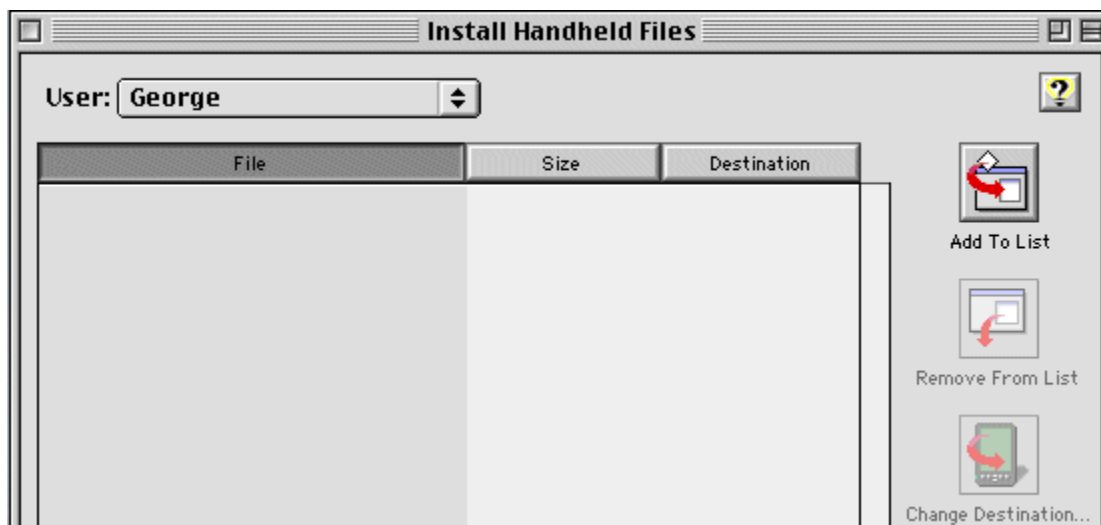
3. At this point, proceed with the instruction for installing PDB/PRC files for Mac OS below.

## INSTALLATION FOR MAC OS (PDB/PRC FILES)

4. Run Palm Desktop's **Install Tool**, for example from the menu bar as shown:

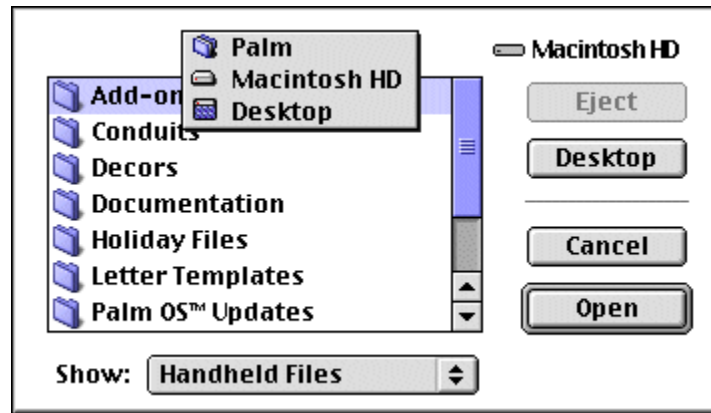


The Palm Desktop Install Tool should appear:

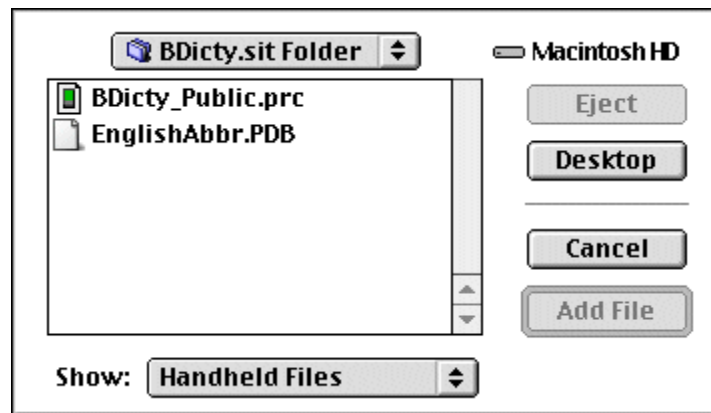


*It is a good idea to check if you are running the latest version of Palm Desktop and, if necessary, to upgrade. Palm Desktop is freely available at Palm's website [www.palm.com](http://www.palm.com) and, at least for as long as we know it, every next version was backward compatible, more reliable and offered more features.*

5. Make sure that the appropriate User Name (the one that identifies your device) is selected in the “**User:**” field.
6. Click the “Add to list” button in the Palm Install Tool. A folder selection dialog will appear:



7. Navigate to the folder with the extracted or downloaded files. In our example, this is “**BDicty.sit Folder**” under **Add-ons** (created as a result of a SIT or ZIP extraction):



8. Select the listed **Handheld files**. They will have extensions “**.prc**” or “**.PDB**”. If necessary, add them one by one to the list.

*Note 1: Be sure to read the [basic introduction](#) section so that you know which files you need and want to install. The rule of thumb is that you should install all listed files, but sometimes you may not want to install a particular file as there might be more recent version of it in your handheld already. If you are uncertain what to install, you usually better install all listed files.*

*Note 2: At this point, after all files for installation had been added to the **Palm Install Tool**, you may consider [instructing the program to install the large files directly on an external media card](#) (if available).*

9. When all desired files have been added to the **Palm Install Tool** you can close it, place your handheld in the cradle and synchronize it.

## INSTALLING DIRECTLY ON MEDIA CARDS (MMC, SD, MS)

By default Hotsync synchronizes files directly in the main computer memory and users can then move them from and to media cards (when present). In some cases, this may not be possible or is too cumbersome.

For those cases Hotsync provides a way to directly install a file on the external media card. The way it works, is through a button in the Palm Install Tool, which specifies the target location for the file to be installed during next HotSync.

*Note: It is highly recommended that **only** data files (lexicons) be installed on media cards. In addition, the general rule is that only **distributive** files (that is, files found in or produced by distributive packages) should be installed on external cards. Moving files randomly from the main PDA memory to an external card could cause some programs to malfunction.*

## INSTALLING FILES ON MEDIA CARDS FOR MS WINDOWS USERS

MS Windows users can invoke the Palm Install Tool from the Palm Desktop group in the Programs taskbar folder or from within Palm Desktop itself.

Once the files to install had been prepared (see the install instructions on how to do that), they appear in a list in the Palm Install Tool screen.

If the currently selected user's device profile is recognized by Palm Desktop as supporting media cards, the Palm Install tools enables the button that allows changing the destination of a file.

## INSTALLING FILES ON MEDIA CARDS FOR MAC OS USERS

MacOS users can install files directly to MMC cards (whenever present) by using the following steps:

1. Prepare the files to be installed during next Hotsync as described in the chapter [Installation for Mac OS \(PDB/PRC files\)](#).

2. Select the file you want installed on the media card by tapping on it in the Install Tool's list.

If the selected user profile is recognized by the program as supporting external media cards, the "Change Destination" button will become enabled. If it does not or if it is missing, you may need to install more recent version of Palm Desktop or contact Palm, Inc. for technical support.

3. Click the "**Change destination...**" button and select the new destination of the file.

*Note: It is recommended that ONLY the large data files are installed on external media cards. Keep the programs in the main memory.*

## UNINSTALLING THE PROGRAM

1. Switch to the standard Palm Application Launcher by tapping the HOME button (the upper left one of the standard four buttons at the silkscreen). If you are using a third-party launcher, you may need to use a command in it to switch to the standard Palm Application Launcher.
2. Tap the MENU silkscreen button to invoke the Palm Application Launcher menu.
3. Select the "Delete..." menu command.
4. Locate BDicty, tap to select it and tap the "Delete" button.



# **PURCHASE AND REGISTRATION**

## WHICH IS WHICH

Unless otherwise mentioned in the particular package description, the dictionary program and the lexical files for it are separate products. Different lexicons often come from different vendors and do not have to be related to Beiks. **Purchasing the Pro version of the dictionary program does not and could not automatically entitle users for all available lexicons and the other way around (again, unless otherwise mentioned in the package description!).**

Depending on the distribution channel, the terms **registration** and **purchasing** may be used with the **same meaning**, namely – providing the most complete version of a product, whether a program or a data file (lexicon).

If you have obtained the program from a **retail store** and was given particular registration number, the term **registration** may actually refer to the act of notifying Beiks you bought one of our products and want to obtain the according extra privileges as stated on the retail packaging.

## DO YOU HAVE TO PURCHASE/REGISTER

If you have obtained this package as part of a retail package or it was sold to you as “full product”, then you probably do not have to purchase anything. However, it is still possible that either the program or the lexicon(s) are not complete, depending on the product packaging. Beiks dictionaries are sometimes licensed to 3<sup>rd</sup> party companies and bundled with other products. It is then possible that you may still have the Public version of the program.

To find out whether your copy is the full or the light version, refer to the About screen via the About command in the application menu.

In such cases, refer to the product specific documentation and your vendor for details.

## WHY REGISTER/PURCHASE THE DICTIONARY PROGRAM

The dictionary program comes in two variants – **Light** (public, free) and **Pro** (commercial, registered). As the names suggest, the light version is free use, but lacks some features, which are only available in the Pro version. Users may not necessarily need those features and thus they can easily save the registration fee for the full-blown version until they get to need them. Furthermore, many *bundles* come with included Pro version, so customers may not need to order it separately.

Here are some of the extras that the **Pro** version offers over the Light one:

- Ability to extend the dictionary with custom entries as well as add custom comments to the stock articles;
- Full support for phrasebook dictionaries, including *talking* phrasebooks;
- Extra set of lexicons, including **American Abbreviations Dictionary, Standard Travel Phrasebooks (English/French, English/Spanish, English/Italian, English/Russian, English/Russian Romanized)** and others; these are only available if the full version is ordered as a separate title (registered) directly from [www.beiks.com](http://www.beiks.com) and **not** if the Pro version was acquired as part of a bundle or package
- More frequent and solid updates than the Light version; many or all of these updates will be free; as of its 3<sup>rd</sup> year on the market and after more than 9 releases the program still does not have a single commercial update, although we reserve the right to make one per year.

For full list of the compelling reasons to switch to the **Pro** version, please go to the product page at our website:

<http://www.beiks.com/palmzonebg/bdicty.htm>.

## WHY REGISTER/PURCHASE A LEXICON

If you want the full content of a particular lexicon you will need to purchase or register it. Most lexicons come in trial versions, which are only limited to certain

size of entries. For more details, refer to the product description at the according website.

*Note: sometimes you may find good deals on **dictionary bundles**, in which case both the program and the lexicon(s) come with their full versions at discounted price; this includes most bidirectional dictionaries ,all talking phrasebooks and many other titles.*

## HOW TO PURCHASE / REGISTER

To order particular title that you have been evaluating, please go to your vendor's site or web site or our website [www.beiks.com](http://www.beiks.com).

Generally, we recommend first checking the recommended distributor in the application's ABOUT screen of your copy of the program. Particular titles and bundles may be available with one distributor and not with others. This includes our own website, although chances are that it would offer better selection than any particular distributor alone. Yet, it may not offer the discounts or certain titles that are available through the indicated distributor page.

If you go to our website [www.beiks.com](http://www.beiks.com) and locate the title you are interested in, you can place your order immediately by using all major credit cards. The transaction is protected by military strength encryption and guaranteed by Beiks and its partners' experience in the field. Purchased files are immediately available upon successful order completion and remain active in the online database for as long as Beiks can keep them with a minimum of one year.

During the purchasing process you may be asked about your Palm User Name or other information that will be used to identify your licensing identity. Appropriate instructions on how to obtain this information will be provided during the purchasing process.

# USING THE PROGRAM

## BASIC INTRODUCTION

Whenever the program is run, it first searches the internal and external memory for installed lexicons. Upon completing the search it locates the last used lexicon or just the first lexicon in the list and opens it for work.

There are by far two major types of lexicons: **dictionary lexicons** and **phrasebook lexicons**. They have a lot in common, but are still displayed in different program screens and have slightly different features.

All lexicons that come predefined by a vendor are called **stock lexicons**. Due to their highly optimized structure and relatively little processing power of PDAs, the stock lexicons can not be directly edited by the user.

However, for every opened *stock* lexicon the program automatically creates a **custom lexicon** in the main device memory, which is used for custom extensions and notes. This is all happening transparently to the user, but is important to know since it explains how you can and should use custom lexicons.

*As of version 5, the program only provides user interface for extending dictionary lexicons; it does not provide a way for extending phrasebook lexicons.*

**Silkscreen area** is the area of the PDA's display where the Graffiti entry occurs. Some PDAs may have keyboard there. Others may have it displayed as part of the screen.

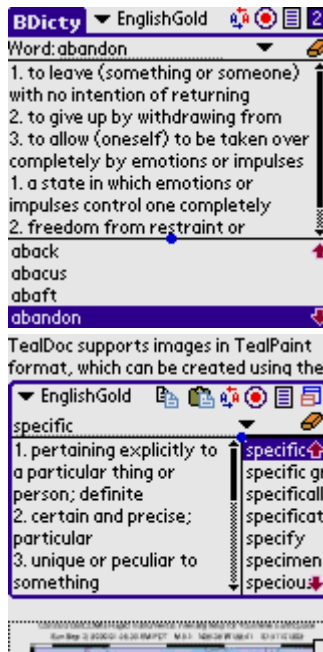
The **MENU button** invokes the **Application menu**.

The **Command Bar** is a helpful context-sensitive menu, which can be invoked by entering the **Command character** or pressing a keyboard key (for models with keyboards). For details please refer to your particular device manual.



## MAJOR APPLICATION SCREENS

The major applications screens determine the major application functionality. Here is a quick look of the screens you will see:



### Standard dictionary browse / lookup screen

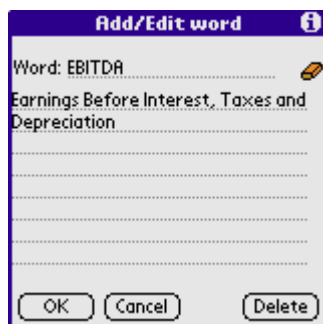
This is the most commonly used screen. It is displayed whenever a **dictionary** lexicon is opened (as opposed to a **phrasebook** lexicon).

Allows you to browse and lookup word definitions.



### Resident dictionary lookup screen

This screen appears whenever you invoke the dictionary for a quick look-up from within other applications.



### Phrasebook dictionaries screen

Whenever the opened lexicon is a *phrasebook* (as opposed to standard dictionary), it will be displayed in this view.

*Talking* phrasebooks have a speaker icon in the upper right corner as the one on the picture.

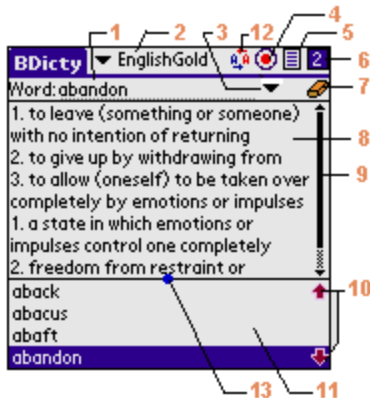
### Add / Edit screen

This is where new words can be added or custom articles (memos) can be recorded for stock words.

*Note: only available in the **Pro** version of the program.*

## STANDARD DICTIONARY BROWSE / LOOKUP SCREEN

This is the most commonly used screen. It appears whenever a dictionary lexicon is loaded as well as in some exceptional cases, e.g. when a lexicon could not be displayed for whatever reason.



- Sought word field.** This is where the word to search is entered. Both Graffiti and the system keyboard can be used for that purpose.
- Active lexicon selector and indicator.** It displays the currently open and active lexicon and can be empty if the program did not find any appropriate files at startup. Tap on that field to see the alphabetically sorted list of available lexicons and eventually select a new one. Lexicons that are located at external media cards have little card sign in front of them. Switching between lexicons preserves the current word.
- Most recently used list trigger.** Tap on that trigger to see and recall the most recently used found words in the program. As of version 5 of the program the list is global for all words across all used lexicons, but words that were used in other lexicons could not be automatically revoked. That is, the program will report that the word is from other lexicon than the currently active one and could not automatically invoke it. Future versions of the program will allow greater flexibility for MRU. Also, the amount of most recently found words is currently fixed.
- Add / Edit button.** The button allows for custom expansion of the opened dictionary. Taping it switches the application to the Custom Memo [Add/Edit screen](#). If a custom article was currently displayed in this view, it will automatically be displayed in the other screen for editing. See also control 5.
- Stock / Custom article indicator & switch.** This control serves as both indicator and switch for source of the displayed article.

If the word entered was found in neither the stock nor the custom lexicon, then nothing will be displayed here.

If an article was found in the **custom** lexicon, then it will be displayed and corresponding icon will indicate that this is **custom** article.

The same applies for found **stock** articles with the note that whenever a custom article is found, it will take precedence (this might be configurable in future versions of the program).

When both **custom** and **stock** articles are available for a word you can tap the image to switch between them. Since stock articles cannot be removed or modified, whenever you add a custom article (memo) for an existing word, you will be able to switch between it and the original article.

6. **Pane switch.** Use that button to manually switch between wide and thin pane modes:



Pane mode 1 has more listed words and less space for the article.



Pane mode 2 has more space for the article and less for the list of words.

The displayed pane mode is also affected by the [Smart View](#) configuration setting. If it is activated, the user can only switch the pane arrangement for as long as the active word remains the same. Upon its change, the [Smart View](#) setting will cause the panes to be adjusted automatically.

The button is active in both Horizontal and Vertical views.

The ratio between the two fields (article and word list) can be adjusted by using the pane adjustment control [13](#).

7. **Eraser button.** Tap the eraser button to erase the currently entered word.
8. **Article text field.** The current article is displayed in this field. Upon program startup, you can also see some hints or system messages here.

The field is read-only. Even if you see a cursor in it, upon any character entry the cursor will automatically shift to the main word field and the input will go there.

Whenever the article field has the focus (the cursor), the hardware buttons for up and down can be used for scrolling the field. On devices with jog dial, the jog can also be used.

Words and passages can be selected in the field and then copied to clipboard through the **Edit Menu** or through the command toolbar.

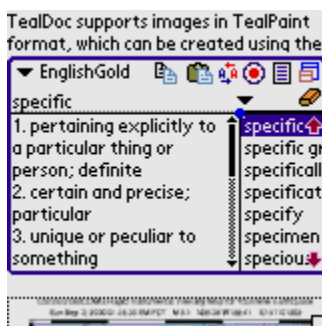
9. **Article text field scrollbar.** Use this scrollbar whenever the article field could not fit the full article contents.
10. **Word list navigation buttons.** Use the navigation buttons to browse the lexicon word list. The same effect can be achieved by using the device's hardware up and down buttons, when the focus is in the word field (not in the article field). On devices with jog wheel, roll upwards and backwards to achieve the same effect.
11. **Word list.** The lexicon's word list that can be used for browsing or quick word selection. It includes both **stock** and **custom** words.

Tap on a word to automatically select it in the word field and see the article for it. This will also automatically switch the focus to the article field, in case the article text needs to be scrolled. Using the navigation buttons to scroll the list does not switch the focus to the article field.

- 12. Cross-lookup button.** If you select a word in the article text field **8** (usually by taping it twice), you can then use this button to instruct the dictionary to lookup the selected word. Unless the selection is too big, it will be copied into the word field **1** and then looked up. Depending on the type of the currently opened lexicon, the new entry will be looked up in either the reverse lexicon or in the same lexicon (if a reverse one could not be found). For example, if the installed lexicon is “En2Ger” and you use button, then the program will attempt to switch to “Ger2En” lexicon before making the lookup of the selected word. If reverse lexicon could not be found, then the program will try the lookup in the currently opened lexicon.
- 13. View panes adjustment picker.** Taping on this dot and moving the pen around will allow you to resize the view panes for the current display view **8**. Settings are remembered across application sessions. When the panes are split horizontally, we recommend that you adjust the panes so that a whole text row is being displayed in the article field. *This control will not function properly under Palm OS version 3.0 – sorry, it was way too hard to make that happen and preserve compatibility with upper OS versions.* As of version 5, while in resident lookup mode the panes can only be adjusted vertically and the setting is shared with the standard lookup mode setting.

## RESIDENT DICTIONARY LOOKUP SCREEN

This screen appears when the dictionary gets invoked from within other applications for a quick lookup. The specific thing about it is that the actively running program will not be closed, but only temporarily left in the background.



*Note: the Resident Lookup feature has to be enabled in the [program's resident settings](#) in order for this feature to operate.*

*Note: in the Light version of the program, this screen will be functional, but words will not be automatically picked from the background program, even if it is possible. The user will have to manually enter them.*

Depending on the settings for resident invocation, this screen can be invoked through the command toolbar or by specific key combination. Some devices and OS versions may not allow one or the other method to be used at all. For more details, refer to the [Resident Lookup Settings](#) section in this manual.



Upon resident invocation, the program will try to locate a cursor in the currently active screen and eventually pick up the word underneath it for translation.

In addition to the [Standard screen](#) buttons, the resident lookup screen has buttons for quick access to clipboard operations, namely copy and paste.

The rightmost button is used to switch from resident to standard dictionary mode.

*Note: Switching from Resident to Standard mode requires the actual active program (which is in background while the resident screen is active) to be closed. The dictionary program will then become the device's active program.*

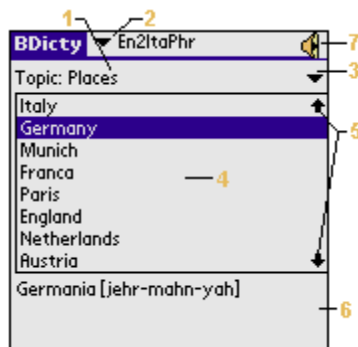
To close the Resident View mode and return to the original application, tap anywhere outside its borders.

Note there is no Application Menu allowed in Resident View. Also, currently only Horizontal view is allowed and only dictionary lexicons can be opened for lookup (no phrasebooks). Future versions may address some of these limitations.

## PHRASEBOOK SCREEN

Phrasebooks are lexicons containing phrases and words organized in topics for convenience and faster lookup. In phrasebooks, users do not enter free text, but select from predefined topics and topic entries to see the translation. Whenever a phrasebook lexicon is opened, it is automatically shown in the appropriate phrasebook view as displayed on the image below.

Some phrasebooks have additional sound databases, which allow the phrases in the destination languages to be played. Whenever such a lexicon is loaded and the handheld has resources for playing the clip, the speaker icon 7 (see below) will be displayed.



1. **Current topic.** This is where the currently selected topic is displayed. Use the topic selector 3 to pop the list of available topics and change it.
2. **Active lexicon selector and indicator.** See the corresponding description in the [Standard Dictionary Screen](#) section.
3. **Topic selector.** Use it to pop up the list of available lexicon topics and select the current topic.
4. **Phrase list.** This is the list with available phrases for the topic. Tap on a phrase to see its translation in the translation field 6.
5. **Phrase list scroll buttons.** Whenever the phrase list is too long to fit the available screen space, use the navigation buttons to scroll up and down. On devices with jog wheel, the same can be achieved by rolling the wheel in the appropriate direction.
6. **Translation field.** The translation of the currently selected phrase appears here. Sometimes it may include additional information, such as pronunciation, variations etc.
7. **Play button.** The Play button is shown in the upper right corner of the display when the active phrasebook has a sound file allowing it to play the recorded phrase.

Note that due to the different device capabilities, the talking phrasebooks require different sound files to be installed in order to play. As of version 5 of the program, there are two types of devices that can play sound: Sony® Clie® devices running Palm OS 4.x and all devices running Palm OS 5.0 (like Palm Tungsten T and Sony Clie NX series devices). Installation packages usually contain both sets of sound files, but you have to pick and install the appropriate one.

## PROGRAM SETTINGS SCREEN: GENERAL SETTINGS

The General settings screen controls the following:

- **Dictionary Screen View Mode (Horizontal / Vertical)**

This setting controls how the **Article Field** and the **Words list** will be aligned in the Standard Dictionary View screen. The setting remains consistent across application sessions, but note it is only valid for dictionary lexicons and for standard view (not in resident view).

- **Smart View**

While searching for a word or browsing the lexicon, the user will normally want as much space available for the lexicon words as possible. In turn, whenever the article is of interest, the user will want more space for it and less (or none) for the word list. The **Pane Switcher** control can be used to switch between the two available pane modes, but doing that manually every time can be too bothersome. This is where the **Smart View** can be of use. Whenever activated, if the word in the word field is not recognized, **Smart View** will automatically adjust the panes to have more room for the list. Accordingly, when the word entered is found, it will make more space for the article.

The **Pane Adjustment Picker** can be used to change the display space ratio of the article field and the word list field.

- **Display fonts**

This settings control the used display fonts for the article field and the word list field. For now, only a few system fonts are available for selection, but this is likely to change in next program versions.

- **Resident lookup mode**

One of the most useful program features, the resident lookup mode allows the dictionary to be invoked for a quick lookup from within any other program. For details on how to do that, see the chapter [Resident Dictionary Lookup Screen](#).

*It is required to keep the dictionary program in the main device memory if you want to use this option!*

On a side note, using this setting (and making resident lookups) **may** cause some programs to misbehave. This is less likely to happen on devices running PalmOS 3.5 or higher, but still possible. If you note such improper behavior try turning the setting off or do not use from within the particular program. You may also consider notifying the program's developer as well as Beiks, but be prepared to hear from both sides that this is just the way it is.

- **Defaults restore button**

One of the best features in every program, this is the first thing to try whenever the program misbehaves. If it doesn't help, [contact us!](#)

## PROGRAM SETTINGS SCREEN: MEDIA SETTINGS

The media screen allows you to configure where the program should look for installed lexicons. The lexicon discovery is made every time the program is run and there are few things you can do to speed up the process.

- **RAM and ROM cards**

The "RAM and ROM cards" setting is usually enabled for all devices, as this is where Palm Desktop installs all new files, unless instructed otherwise. Effectively this means that the program will have to check out **every single** file installed in the RAM memory in order to see if it is a lexicon. The process is fairly fast, and there is no other option anyway for devices without external cards, so leave it checked in if your device is in that group. There are also some devices that have external ROM cards (e.g. Handspring Visor) and other devices which emulate RAM cards (older TRG devices and MemPlug-enabled devices), which will need this setting activated, regardless of the fact that they practically use "external cards".

*Note: When talking about "external media cards" we should probably clarify that it refers to cards that are accessible with the standard introduced by Palm OS version 3.5, called VFS (Virtual File System). There are a few card extensions that **do not** support this standard and the below two options will not be available for them. Usually, the manufacturers of those cards provide*

*some software that emulates device ROM or RAM card. This may or may not work well with the dictionary, depending on the level of their emulation.*

- **External card common directory**

This setting is only enabled for devices with external card through the VFS standard. This is the directory in which Palm Desktop installs the files when explicitly instructed to install them on a media card. As a result, this directory becomes a mess of files and since the access to media cards is much slower than the access to the standard memory, users may realize that the startup time of the dictionary increases greatly. The proper solution to the problem is to [install](#) and keep each program's files in a dedicated directory on the card, so that they can be enumerated much faster when needed. In fact, the only reason for using "Standard Media Directory" is to help novice users get accommodated to the program. As soon as you become more familiar with your handheld, you should consider using the dedicated dictionary directory.

*Note: Despite our best efforts, sometimes the program may not properly guess the common directory for a particular device. If you install a file on external card and the program does not find it with this setting being activated, take a look at the device manual to see where the default card directory is.*

- **External card dedicated directory**

The External card dedicated directory is only available when the device supports external media cards through the VFS standard. Moving all large lexicon files to such a directory and turning off the common card directory setting may significantly improve the startup time of the program.

You may, however, need a third-party program in order to do the moving. *MS Gate* and *MS Import* can be of great use on Sony devices, especially the second one, since it allows files to be directly installed to a *particular* directory on the card. Otherwise, you would need to use the RAM card as temporary buffer to transfer the file and that may sometimes not work due to space limitations. Other programs and tools are available on other hardware platforms and more powerful 3<sup>rd</sup> party applications are available on the PalmOS software depositories.

At the very minimum, files can be transferred between the card and the main device memory through the standard Application Launcher. Refer to the device manual for details on how to use it.

### PROGRAM SETTINGS SCREEN: STARTUP SETTINGS

The startup settings define a few things that the program may do when started. They usually control a trade-off between functionality and speed and might be initially configured for better program introduction rather than for optimal usability. Turning them off may help experienced users to be more effective.

- **Random word (word of the day)**

This setting will cause the program to display a random word from the newly opened dictionary lexicon. This is useful for learning new words. Checking this option automatically enables the below option too, since the time for decompressing the data buffer will have to be taken anyway and it is more convenient to display the list.

- **Show word list for browsing**

Enabling this setting will cause the word list to be automatically displayed upon dictionary lexicon opening. Note this will introduce a slight delay in the initial program startup as part of the dictionary gets decompressed and visualized. If the option is not activated, then the list with words will be displayed as soon as the user starts searching for a particular word.

A simple way to manually force the list to show from the start is to press the *eraser* button.

- **Show hints**

This setting controls whether to display hints upon program startup. Note hints will only be displayed if there was nothing more important to be displayed (e.g. error message or lexicon predefined welcome screen). Since the random word option does cause a text to appear, it is automatically turned off when “**show hints**” gets enabled.

While useful for initial learning of the program, the hints will become bothersome to regular users and they may want to turn them off.

### PROGRAM SETTINGS SCREEN: RESIDENT LOOKUP SETTINGS

The resident lookup feature allows the program to be invoked for a quick lookup from within any other program. Think of it as a quick shortcut to the dictionary, but without the need to actually leave the currently running program.

This is not a standard PalmOS feature and is possible to interfere with other similar programs (sometimes called “hacks” or “OS extensions”).

The resident lookup settings screen allows you to configure whether and how the resident lookup feature is to be used.

If you do not plan to use resident lookups, or if you experience problems operating with programs that used to work fine, you may consider turning the resident lookup **off** and seeing if it makes a difference. Eventually, you can then try to adjust between the different invocation modes the program allows you (if it allows you more than one) and/or contact [support@beiks.com](mailto:support@beiks.com) for technical support.

Depending on the device and the PalmOS version it is running, the program may allow you two different ways to invoke it: **through hotkeys** or **through the Command Bar**.

- **Hotkeys invocation**

This mode will be allowed for most devices running PalmOS up to and including PalmOS 4.1. It will not be allowed for devices running PalmOS 5.0 and later.

Selecting that mode gives you the opportunity to select between two or more control combinations that may trigger the resident lookup mode. Choose the one that best suits you and does not interfere with other applications.

To invoke the dictionary from within other program, all you have to do is use grafitti (or device keyboard, if it has one) to enter the two specified characters.

For example, if you have selected “Command + Find” combination, then you should enter the “/” character for entering system command shortcut and then quickly tapping the Find button.

If you have selected “Menu + Backspace” combination, you have to tap the menu button and then quickly enter a backspace character. This combination has been introduced primarily for Handspring Treo users with device keyboards, who do not have way to enter a Command character.

- **Command bar invocation**

The Command Bar invocation should be allowed on all devices running PalmOS 3.5 and higher. In this mode, invocation is done through the system command bar, where the program adds its own lookup icon. This icon will appear whenever the bar is invoked for whatever reason.

Note: As of version 5, there have been some reports for compatibility problems with other applications when the resident lookup mode is enabled. None of them was critical, but you should be prepared to see problems; if this happens try turning off OS extensions (hacks) and other similar software to figure out the conflicting application; if possible, try to switch to hotkey invocation. If nothing appears to help, please contact [support@beiks.com](mailto:support@beiks.com) and visit our website to check if the problem had not already been recognized and fixed.



## ADD / EDIT SCREEN



This is where new entries can be added to the dictionary lexicons and custom notes can be made for the existing ones.

The screen will appear whenever a dictionary lexicon is opened and button **4** from the standard or resident dictionary screens gets tapped.

If a word has been selected on the screen, it will automatically be put in the corresponding field in the editor. Normally, you wouldn't want to change that word, but the article for it.

**How does it work:** as pointed out already, for every open **stock** lexicon the program automatically creates corresponding **custom** lexicon, where it stores the user entries. It doesn't matter if a custom word is already present in the stock lexicon or not - **all** custom entries go to the custom lexicon!

Therefore, a stock article is never truly **edited**. All user definitions are always stored in their full size, which is why it is not a very good idea (memory-wise) to **edit** a stock article, but instead to **comment** it.

Taping the **eraser button** will delete the text in the field that currently contains the cursor.

Taping the **delete** button will remove the entered word from the custom lexicon. Again, words and articles from stock lexicons are never actually modified or deleted.

## COMMON COMMANDS AND OPERATIONS

### CHANGE CURRENTLY ACTIVE LEXICON

Change the currently active lexicon through the drop-down list **2** in any of the main application screens. If a word has been selected when changing between dictionary lexicons, it will remain selected and will be automatically searched in the newly opened lexicon.

### DELETE THE CURRENTLY ACTIVE LEXICON

Delete the currently active lexicon through the [application menu](#) “**Lexicon/Delete current**”. Deleting will remove the stock lexicon file as well as its corresponding custom lexicon file.

### SWITCH HORIZONTAL/VERTICAL MODE

Refer to the [program settings screen](#) description.

### LOOKUP A WORD FROM WITHIN OTHER PROGRAM

See the description of the [resident lookup screen](#).

### ENTER NEW WORDS

Entering new words is done through the add/edit button in the standard and resident dictionary look screens. Refer to the [Add/Edit screen](#) chapter for more details.

### DISPLAY RANDOM WORD (WORD OF THE DAY)

When a dictionary lexicon is opened, a random word can be displayed by invoking the command “Lexicon/Random word” from the [application menu](#). See also the [program settings](#) on how to display a random word every time a dictionary file is opened.